

THE RESOURCE

A COMMUNICATION FROM INSTITUTIONAL RESEARCH & EFFECTIVENESS & CENTRAL OHIO TECHNICAL COLLEGE

MEASURING

MONITORING

& INFORMING DECISIONS



Newark • Coshocton • Knox • Pataskala

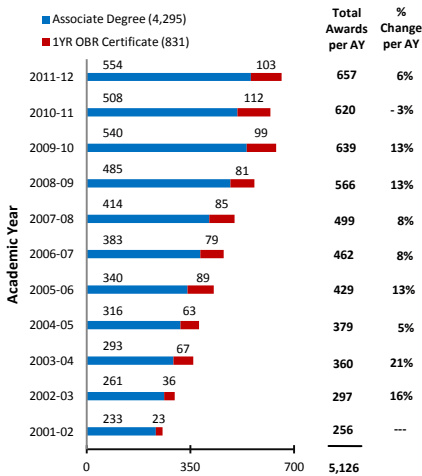
Quarterly Institutional Research & Effectiveness Newsletter

April – June 2013

COTC... In the Know

Over the last eleven academic years, COTC achieved 156% growth in the overall number of awards granted. In the last decade, 9 out of 10 academic years had positive growth. The largest increase was 21% and took place from 2002-03 to 2003-04. The only year to year decrease occurred in 2010-11 when the total number of awards fell by 3%. By level of credential, associate degrees make up 84% of the total awards granted and increased 138% since 2001-02. Ohio Board of Regents approved certificates increased 348% over this same period and represent 16% of total awards.

Academic Awards by Level of Credential



Source: COTC Graduates by Degree and Program

FEATURED INITIATIVES

Program Review Update – Institute for Public Safety

Data collection for the Institute for Public Safety's Basic Police Academy, Forensic Science Technology, Criminal Justice Technology, and Law Enforcement Technology programs will conclude at the end of spring semester.

Information is being provided on enrollment, course outcomes, and technical credits earned by students that inform leadership of program performance and assist decision making. Spanning a total of four academic years, these data provide an evaluation of student performance and allow leadership to identify trends and make adjustments to academic offerings based on empirical data.

Any areas currently planning a review may contact the office at any time with questions at cotcire@cotc.edu.

Upcoming Reviews: Current Schedule

Autumn 2013:

- Electrical Trades
- Fire Science

Spring 2014:

- Human Services
- Advertising
- General Education

Autumn 2014:

- Digital Media Design
- Accounting

Supporting Accreditation Efforts: Business Management Technology

Data were recently supplied to faculty of the COTC Business Management Technology Program in the areas of enrollment and course-outcomes. From summer quarter 2010 through autumn semester 2013, this information allows program representatives to measure and monitor program effectiveness in pursuance of accreditation through the Accreditation Council for Business Schools and Programs. Currently, the COTC BMT program is a member of the ACBSP and a candidate for accreditation while data are submitted. For more information on how Institutional Research & Effectiveness can support programmatic accreditation, please contact cotcire@cotc.edu.

Announcing a Re-designed Website!

We are excited to announce a re-designed website! Located at www.cotc.edu/cotcire, the new format provides easy navigation of available reports and departmental activities.

The 'Research Data' link provides quick access to information such as enrollment reports, admissions reports, and faculty and employee demographic summaries. A web-based data request form is available to streamline the request process and ensure that information needs are met campus-wide. A special 'thank you' goes to COTC's Information & Technology Services for their assistance! Thank you!

Feel free to contact cotcire@cotc.edu with any questions or to provide feedback.



IR & E Online

www.cotc.edu/cotcire

Recent Online Resources Include:

- Spring 2013 Student Body Demographics
- Spring 2013 Admissions Report
- Graduates by Degree and Program

IR & E Calendar Information

- Academic Term Dates
- 2013-14 Academic Calendars

Request Services

Detail your research question to identify data that will assist decision making:

[Request for Services Web Page](#)

Reach Us

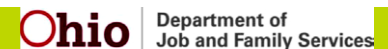
Email: cotcire@cotc.edu
Telephone: 740.366.9383

Supporting the Gateway

Institutional Research and Effectiveness maintains ongoing communication with the COTC Gateway and is often called upon to develop reports and collect information in support of student access and completion efforts.

Data are supplied to Gateway staff that informs them of student behaviors and academic progress. Coupled with contact information, the Gateway is able to reach out to students to communicate the next steps to take to achieve success at COTC. Recent reports include: withdrawals from sequential pre-college courses, prospective post-secondary enrollment option students, and students nearing completion of their plan of study. These activities inform the Gateway and allow them to perform targeted outreach based on specific student characteristics. To submit your own data request, please follow the 'Request for Services' link.

Ohio Labor Market Information



The Ohio Department of Jobs and Family Services' Ohio Labor Market Information (OLMI) system provides data tools and projections that are valuable for gaining perspective of the statewide employment landscape.

Reports span from local employment dynamics to statewide employment projections by industry, and depending on the type of indicator, may be updated on a monthly basis. For individuals interested in conducting research, query tools offer customization based on detailed parameters. Visit ohiolmi.com to learn more.