

.....
**Be part of the newest
addition to our shared
campus.**
.....

Help us meet the needs
of our growing student
body and the workforce
needs of our local employers.
.....

Join us by supporting
the construction of the
**John and Mary Alford Center
for Science and Technology.**
.....



**THE OHIO STATE
UNIVERSITY**

NEWARK



COTC Board of Trustees

J. Andrew Crawford
Steven A. Cohen
Robert A. Montagnese
J. Park Shai III
Cheryl L. Snyder
Marion M. Sutton
Paul M. Thompson
Gordon E. Yance
Barry M. Riley (emeritus)
Sarah R. Wallace (emeritus)

Ohio State Newark Advisory Board

Marcia W. Downes
Talya R. Greathouse, MD
Tara Houdeshell
Katheryn M. Lloyd
Christopher R. Meyer
Matthew R. Miller
Alexa Robinson-O'Neill
Sharad R. Thakkar, PhD
Todd P. Ware

Newark Campus Development Fund Board of Trustees

Mary M. Albright
Ronald B. Alford
Siobhan Clovis
C. Daniel DeLawder
Lee D. Heckman
Douglas F. Mock
Robert A. Montagnese
Robert E. O'Neill
Stuart N. Parsons
Seth H. Patton
Paul M. Thompson
Sarah R. Wallace
William T. McConnell
(emeritus)

Newark Campus Campaign Leadership Group

John M. Berry, PhD
William L. MacDonald, PhD
C. Daniel DeLawder
David H. Brillhart, EdD
Kimberly A. Manno
Jennifer W. Roberts



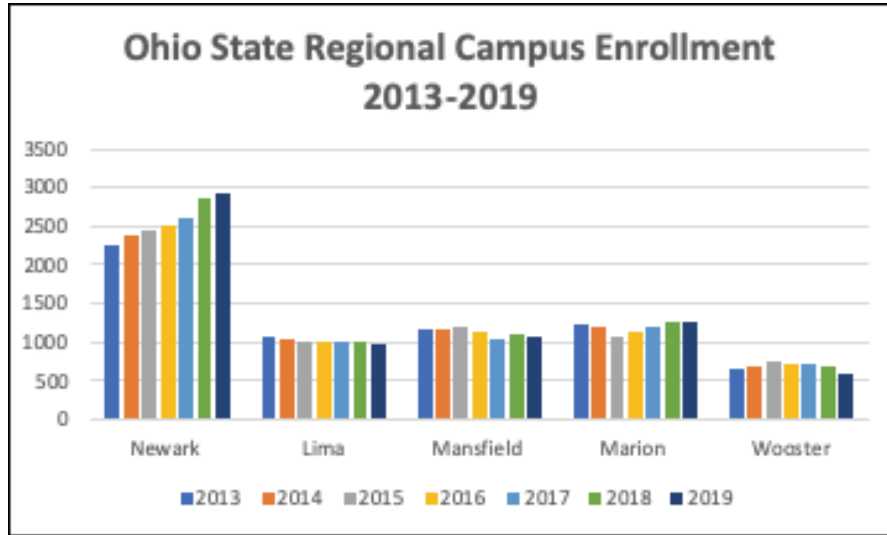
For nearly 50 years, students from near and far have had the opportunity to pursue higher education at the shared campus of Central Ohio Technical College (COTC) and The Ohio State University at Newark. The number of lives enhanced by COTC and Ohio State Newark's vast academic offerings and caring faculty and staff is simply incredible.

Ohio State Newark and COTC continue to plan for the future. Together they have committed \$17.6 million to construct a new science and technology facility that will address the growing need for laboratory, research and technology space. The three-story, 60,000 square-foot-facility will house classrooms, science labs, research labs, student study space and faculty offices. This building will truly be a game changer for the Newark campus and our local community.

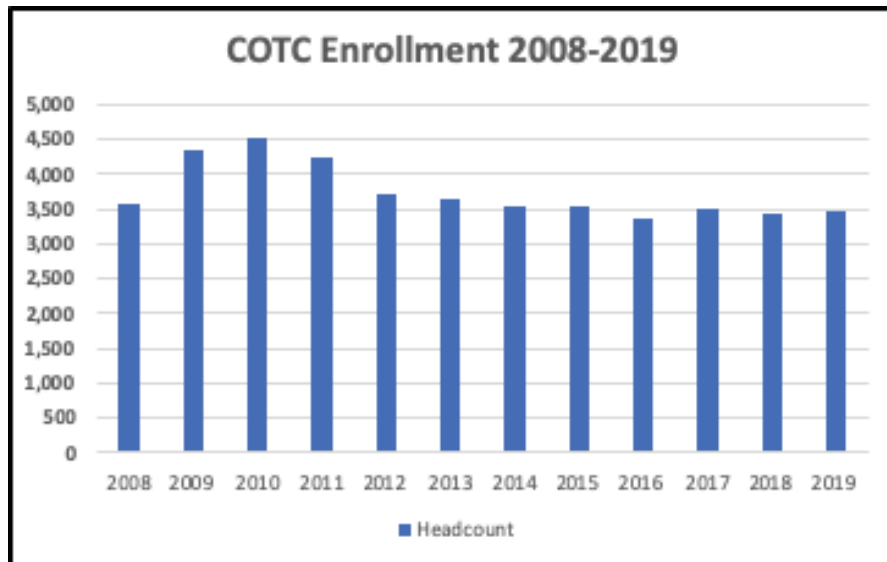
To better meet campus needs, plan for projected enrollment growth and expand academic programming, we are asking community members just like you to help us make this building a reality. **Since August 2018, we have raised more than \$13.6 million toward our \$14.4 million fundraising goal. As we enter the final campaign phase, we need your help.**

Join me by supporting this important effort! Students, employers and our communities will reap the benefits. With your investment, we will continue building for our future.

C. Daniel DeLawder
Campaign Chair

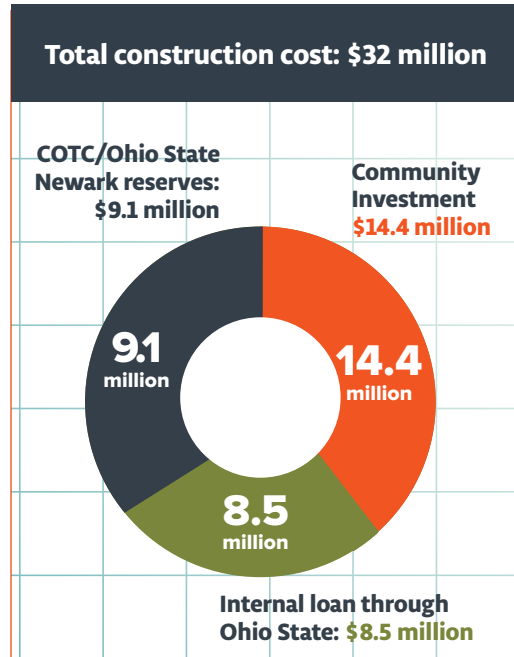


For two consecutive years, Ohio State Newark has experienced record-breaking enrollment. While the continued influx of students has been advantageous for a variety of reasons, it has caused serious space constraints on the Newark campus. Classes and labs are becoming more difficult to schedule, and student study and meeting spaces are at capacity. Ohio State Newark has also experienced a dramatic increase in demand for STEM courses. Academic programming and enrollment cannot expand without a new facility dedicated to science and technology.



Community college enrollment nationwide has declined 11% between 2012 and 2017, but technical post-secondary education is known to ebb and flow countercyclically with the economy. When the economy is performing well and unemployment is low, technical college enrollment tends to be down. However, when there is a dip in the economy and people need to retool their skills, technical colleges typically experience a spike in enrollment. Without a new academic building, COTC cannot accommodate hundreds of additional students should enrollment increase.

The John and Mary Alford Center for Science and Technology



The John and Mary Alford Center for Science and Technology **will allow us to:**

Better Meet Local Workforce Needs

While employment in Central Ohio is projected to increase by 6.7% through 2024, occupational demand in many STEM fields will far outpace this projected increase. Ensuring these jobs are filled with qualified and trained employees will have a direct impact on the region's long-term economic viability for decades to come.

Expand Academic Programming

COTC is launching several new associate degree programs, including anesthesia technology, ceramic engineering technology, and electrical transmission and power distribution technology to produce a pipeline of skilled workers for local employers. Ohio State Newark plans to launch a new bachelor's degree in manufacturing engineering technology as a result of local manufacturers' requests for qualified leadership-track employees.

Enhance Student Success

Ohio State Newark will expand second-year course offerings in science and engineering, so students can take advantage of smaller class sizes and close interaction with faculty for two years instead of one before transitioning to the Columbus campus. COTC students will have the opportunity to learn in a new 3,600-square-foot, multidisciplinary health science simulation center where they will gain hands-on experience with the continuum of healthcare settings from emergency transport, through x-ray and sonography, to anesthesia and surgery.

